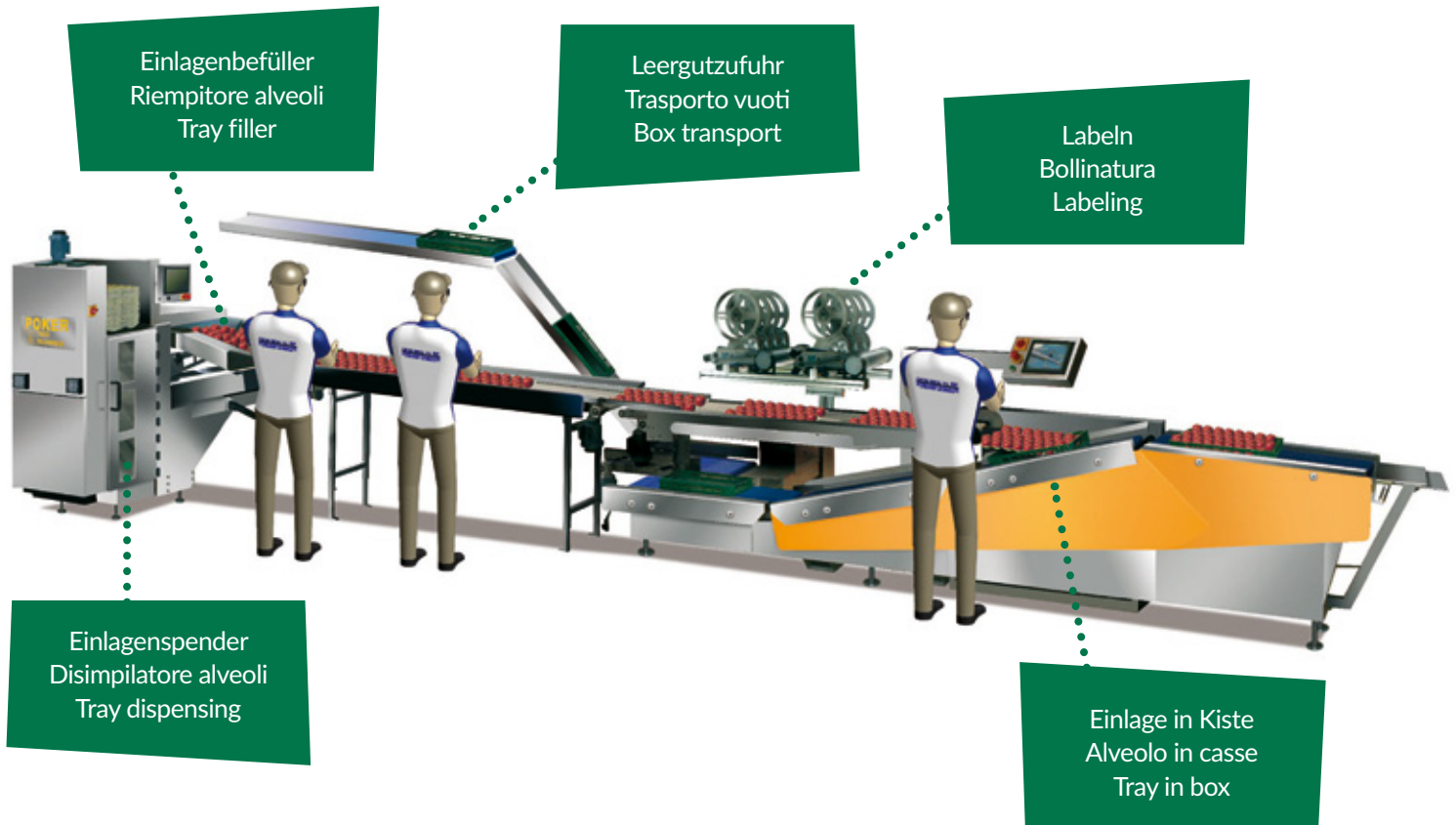


POKER

COMBI-PACKAGING LINE



Kombi- Verpackungslinie für | Linea impacco combinata per | Combined packaging line for



DE

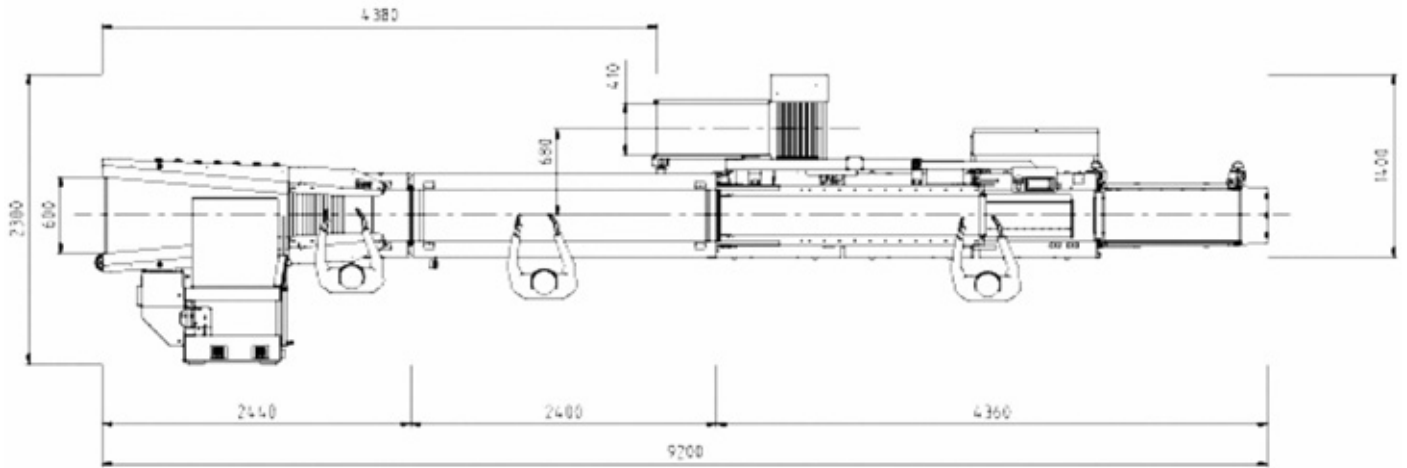
- Gelegte Ware in Kiste: 1-2 Lagen
- Traypack/Bushel: 3-5 Lagen
- Lose Verpackung in Karton/Steigen
- Arbeitet mit Plastik- und Holzschliff-einlagen
- Leistung je nach Frucht und Gebinde: bis zu 5 t/Stunde bzw. 17 Einlagen/min
- Vollautomatische Formatumstellung von Einlagengröße, Fruchtzahl und Gebindetyp

IT

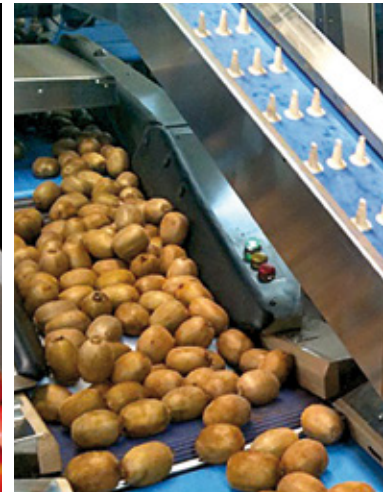
- Prodotto in casse: 1-2 strati
- Traypack/Bushel: 3-5 strati
- Merce sfusa in cartoni/casse
- Idoneo per alveoli in plastica e polpa legno
- Resa: fino a 5t/ora o 17 alveoli/min a seconda del prodotto e confezione
- Il cambio formato delle misure del alveolo, del nr. di frutti e tipi di casse avviene in automatico

EN

- Fruits set in box: 1-2 layers
- Traypack/Bushel: 3-5 layers
- Loose fruits in carton/box
- Works with plastic- and pulp trays
- Output depending on fruit and bundle: up to 5 t/hour; 17 trays/min.
- Full automatic dimensions change of tray-size, fruit-sizes and crates



Soft infeed of trays in carton boxes or plastic crates by telescopic system



Filling solution for round fruits, kiwi, ...



Bushel/Traypack with 3-4-5 layers



Soft filling support of loose fruits in boxes